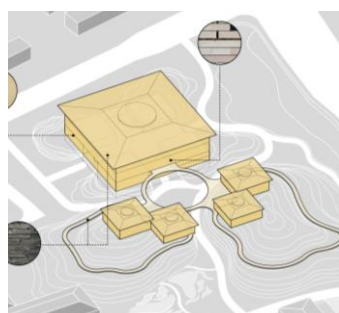
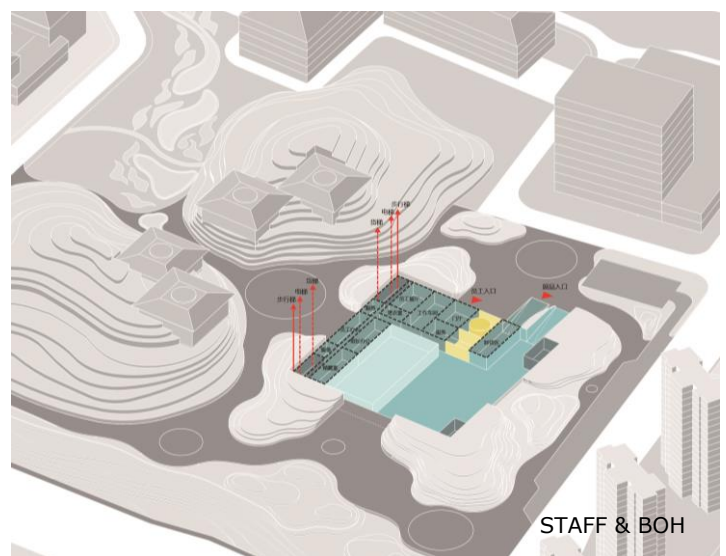
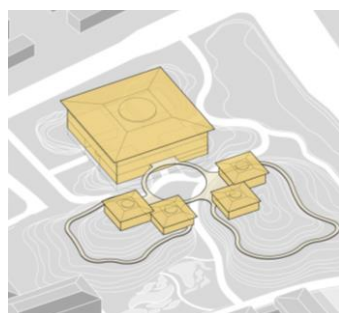
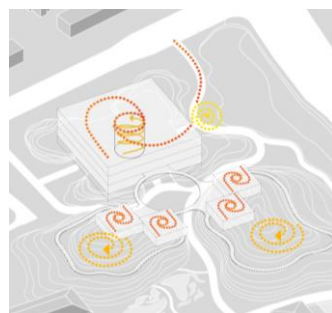
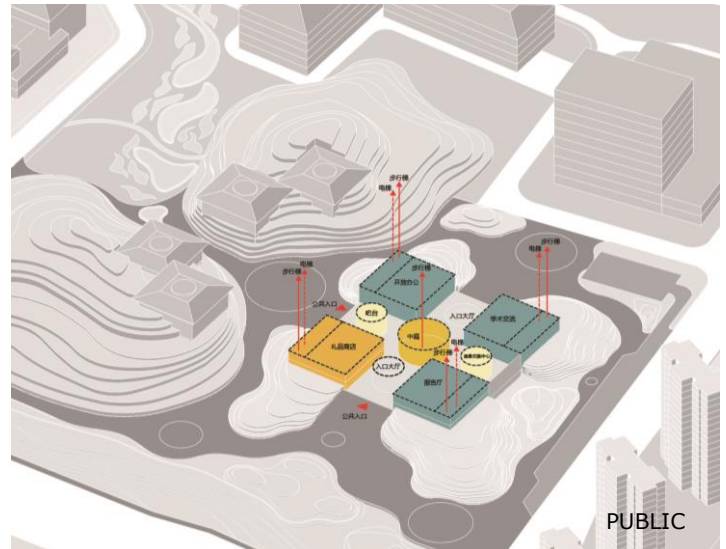
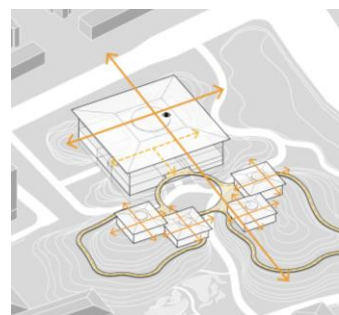
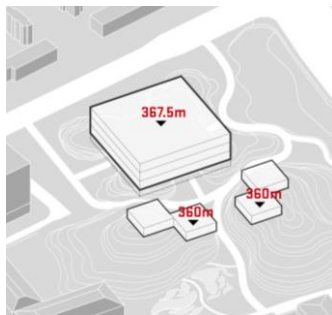


CHINA INTERNATIONAL WINE CULTURE MUSEUM

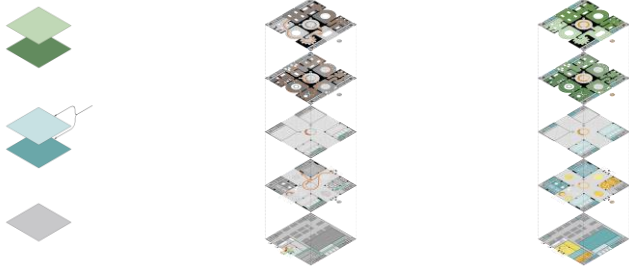
Client	Yibin Science and Education Industry Investment Co., Ltd.
Services	Architecture Design/ Landscape Design
Location	Yibin, Sichuan Province
Scale	66130sqm
Collaborator	Zhongshe Engineering Consulting (Chongqing) Co., Ltd.
Time	2020
Status	Under Construction

China International Wine Culture Museum is located in Yibin, a city with the reputation of "Wine Capital" because of its long history of wine culture. The overall design uses the geometric features of "round inside and square outside" of the ancient sacrificial ritual vessel "Yu Cong" and the Chinese Character "Jiu (Wine)" for reference. Meanwhile, through disassembling, deforming and scale transforming of the Chinese Character "Jiu (Wine)", we aim to meet the different demands of the architecture, landscape and interior design.





HAN & TANG



FUNCTIONAL DIVISION



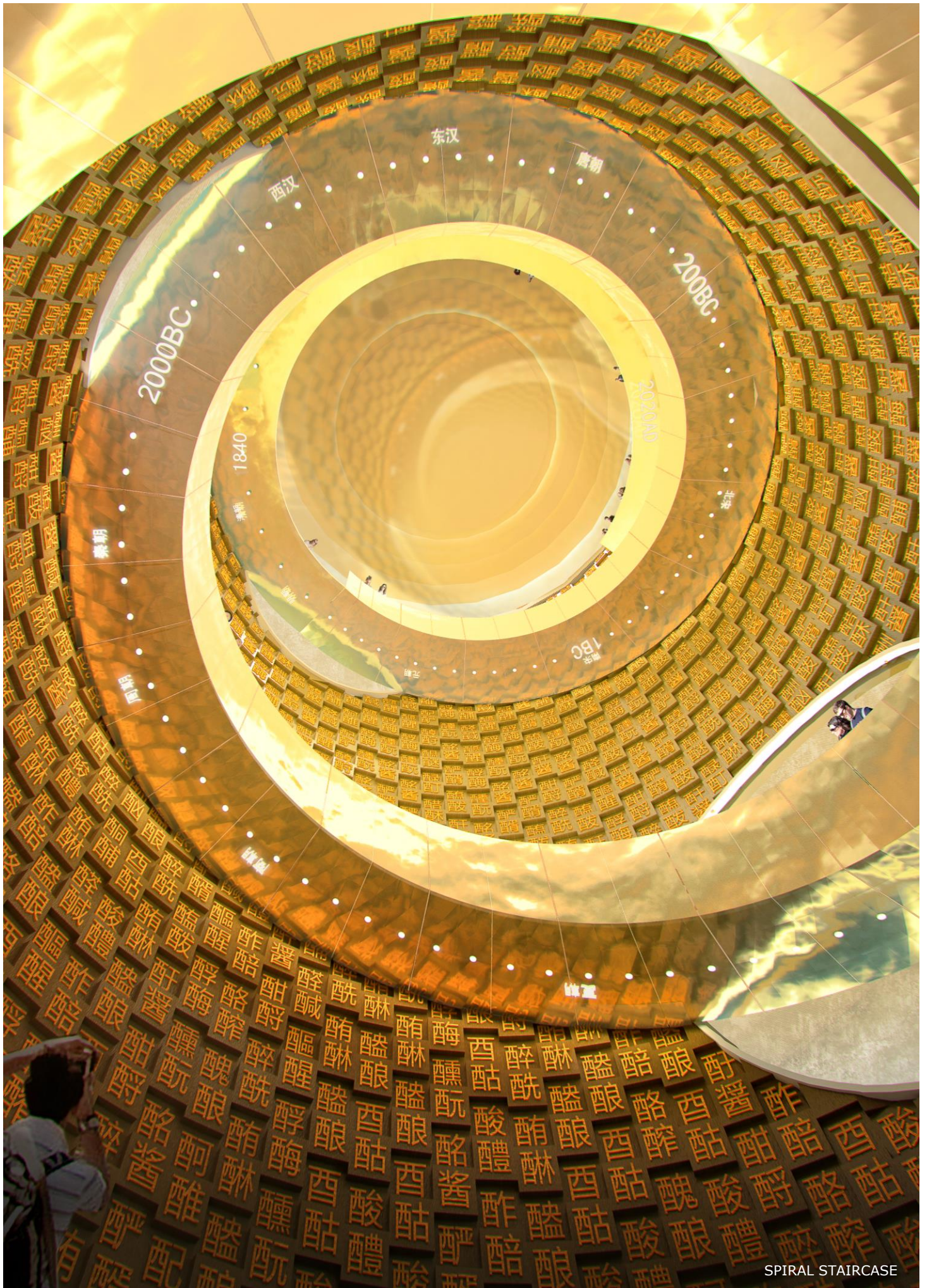
SCULPTURE & ARCHITECTURE

The Museum is committed to displaying the world wine culture, spreading Chinese wine culture and showing their multi-dimensional connotation through the combination of traditional and modern design language. According to the ecological restoration policy of the Yangtze River, we integrate the building with the mountain to create a symbiotic community of wine and nature. Based on the successful operation of contemporary museum, taking full advantage of the academic, tourist and industrial platforms, the China International Wine Culture Museum will play an important role in the new generation of long-term and sustainable cultural buildings in China.



WINE PARK





SPIRAL STAIRCASE