



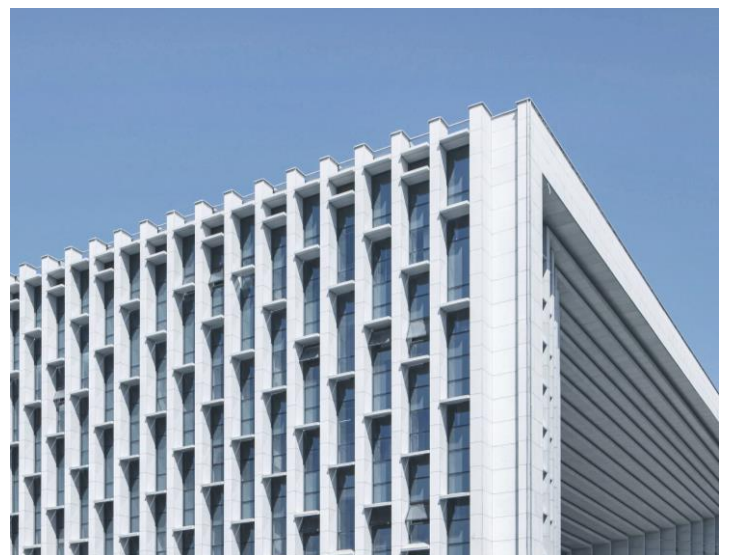
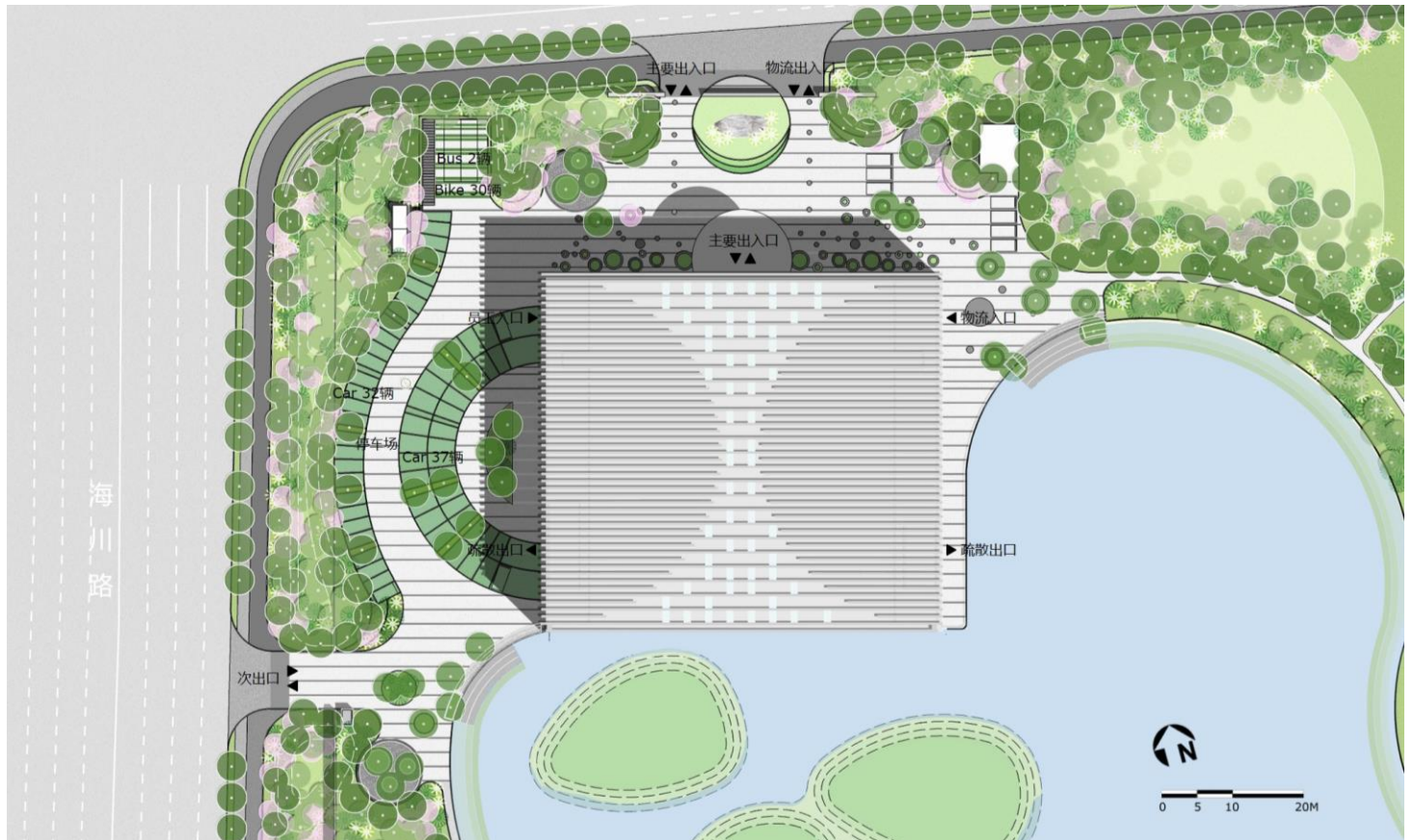
# CNOOC ENERGY EXHIBITION HALL

---

Client	CNOOC Infrastructure Management Co., Ltd (Tianjin Branch)
Services	Architecture Design/Cultural Building
Location	Binhai New District, Tianjin
Scale	18144sqm
Time	2020

CNOOC Energy Exhibition Hall is located at the High-Tech Zone of Binhai New District, Tianjin. Its overall space will be divided into company exhibition area, meeting area and training area etc. The design provides a rich visual experience between buildings and landscape. In our environment design, we adhere to the integration of unified architecture and landscape elements and environmental-friendly design, aiming to form the ecological and ornamental indoor and outdoor experience sequences, to improve the urban fabric. Based on the analysis of the existing demands and features of people, through three major functional areas of public area, business area and administration area, we design the creative area with sense of life, space participation and vitality. Combined the passive and active energy design strategies, our design achieves the organic integration of urban planning, sustainable architecture design and environmental-friendly design, makes the CNOOC Energy Exhibition Hall a creative enterprise display platform, and promotes the industrial development as well.









Design concept comes from the depth resolution of enterprise culture, first of all, the architectural form based on cnooc enterprise LOGO, extraction of circular and sea - water element, and the square elements combine to form the basic shape, round and square intersection main ZhanChen space form, the rest of the form of public hall exhibition space transportation, such as the entrance to the north circular LOGO elements rain loose, main entrance set three floors high school hall, rain loose among home hall, transition to outdoor, indoor space is the main entrance to a big step to the second floor, the west side of the first floor of the administrative office, the temporary exhibition area to the east, along the hall in big steps up to the second floor, On the south side, the water-loving steps transition from indoor to outdoor are formed. The east and west sides of the second and third floors are exhibition Spaces. The middle hall is a public.





